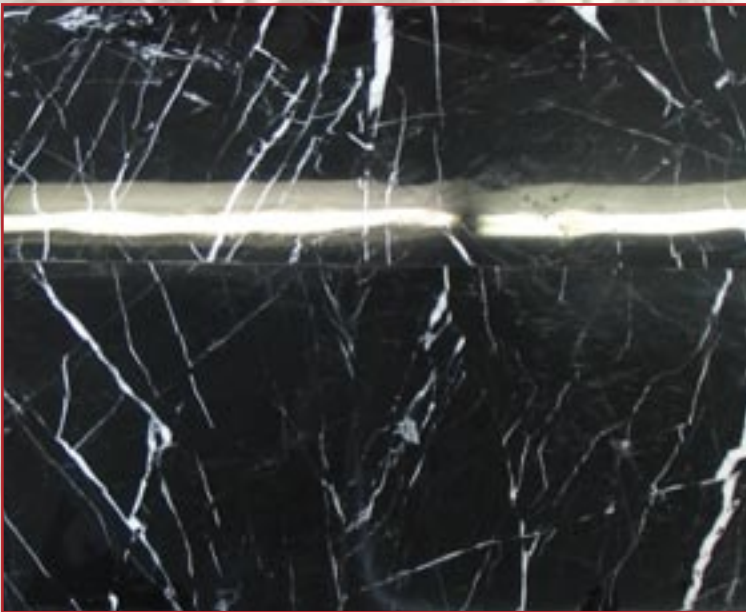


Deep Clean Gel

Removes Grease, Grime, Soap Scum, Hard Water Spots and Food Stains

- Best Suited Polished Stone with Calcium
- Heavy Alkaline Cleaner
- Neutralizes acidic powder residue
- Cleans Grout Joints on Polished Marble



STONE PRO

866.786.6310

www.stoneproonline.com



Product Description: A unique cleaning formulation designed to clean Grease, Grime, Soap Scum, Hard Water Spots and other soils and stains. Used for polished, honed, flamed and tumbled marble, granite, grout, limestone, travertine, natural stone and terrazzo surfaces. Will not harm polished stone. Non-acidic. Terrific for sanded and non-sanded grouts.

Coverage: Product will cover approximately 200 to 2,000 ft.² per gallon dependant on the severity of damage to the marble surface. For stone grout joints which has been heavily soiled, use at 2:1 ratio. Dilution rate may slightly reduce cleaning effectiveness. Light duty areas may be diluted up to 12:1.

Directions: Always test product in an inconspicuous area to test suitability for intended use. Apply Deep Clean Gel to designated area. For small areas, wipe, scrub and/or agitate product into surface using light duty, non-abrasive hand scrubber. For floors, apply product into designated areas. Use a tampico brush to agitate, simply scrub floor liberally. Now, let cleaner dwell, for best results, for approximately 2 to 10 minutes depending on severity. Dwell times allows synthetic surfactants to release, remove dirt to surface. Wipe or wet-vacuum clean form surface. Rinse if needed. For porous stone, remove product using wet-vacuum for best results. This completely removes soil from crevices.

SECTION I - PRODUCT IDENTIFICATION

TRADE NAME: Stone Pro Deep Clean Gel PRODUCT CODE: SPDCG
CHEMICAL NAME: Alkaline cleaner CAS #: Blend, no single CAS # applies
DOT HAZARD CLASS: Not regulated DATE: February 19, 2005
DOT SHIPPING NAME: Not regulated

SECTION II - HAZARDOUS INGREDIENTS

HAZARDOUS INGREDIENTS	%	CAS #	TLV (UNITS)	PEL
2(butyoxyethoxy) Ethanol	<5	112345	None	None
Sodium Metasilicate	<5	6834-92-0	15 mg/m3	10 mg/m3

SECTION III - PHYSICAL DATA

BOILING POINT: (F) 212 SOLUBILITY: Complete pH: 13
VOC: 20.8 g/L VAPOR DENSITY: N/A VAPOR PRESSURE: N/A
EVAPORATION RATE (WATER = 1); >1 SPECIFIC GRAVITY: 1.04
APPEARANCE & ODOR: Yellow liquid with lemon odor.

SECTION IV - FIRE AND EXPLOSION HAZARD INFORMATION

FLASH POINT: N/A
FLAMMABLE LIMITS: N/A LOWER: N/A UPPER: N/A
FIRE/EXPLOSION HAZARDS: None
EXTINGUISHING MEDIA: Foam, CO2, dry chemical
FIRE FIGHTING PROCEDURES: Fire fighters should wear self-contained breathing apparatus and full protective clothing. Use water spray to cool nearby containers and structures exposed to fire.

SECTION V - HEALTH HAZARD INFORMATION

PERMISSIBLE EXPOSURE LEVEL: ND
EYES: Will cause irritation and redness.
SKIN: Prolonged contact will cause irritation and redness.
INHALATION: Prolonged inhalation of mist will cause nasal and respiratory irritation.
INGESTION: Can cause gastrointestinal irritation, nausea, vomiting or diarrhea.
THIS MATERIAL IS NOT LISTED AS A CARCINOGEN BY IARC, NTP OR OSHA
HMIS HAZARD CLASS: Health = 1 Flammability = 0 Reactivity = 0 Other = NA
Ranking: 0 = Least 1 = Slight 2 = Moderate 3 = High 4 = Extreme

FIRST AID

EYE CONTACT: Flush with water for 15 minutes lifting eyelids. Get medical attention immediately
SKIN CONTACT: Wash with water and treat with any moisturizing cream.
INHALATION: Remove victim to fresh air. Administer artificial respiration if breathing ceases. Get medical attention immediately.
INGESTION: Do not induce vomiting. Give lots of water. Give milk of magnesia. Call a physician.

SECTION VI - REACTIVITY INFORMATION

Deep Clean Gel

STABILITY: Stable

REACTIVITY: None will occur

HAZARDOUS DECOMPOSITION INGREDIENTS: N/A

HAZARDOUS POLYMERIZATION: Will not occur

SECTION VII - SPILL, LEAK AND DISPOSAL PROCEDURES

SMALL SPILLS: Mop, sweep or absorb. Transport to non-hazardous land fill.

LARGE SPILLS: Mop, sweep, or absorb. Transport to non-hazardous land fill.

DISPOSAL: Dispose of in accordance with federal, state, and local regulations.

SECTION VIII - SPECIAL PROTECTIVE EQUIPMENT

EYE AND FACIAL: Wear chemical splash goggles.

SKIN: Vinyl, rubber, or nitrile gloves should be used.

RESPIRATORY: Provide OSHA approved mists respirator.

VENTILATION: Local mechanical ventilation to keep TLV'S below recommended levels.

OTHER: Wear protective apron, boots, and clothing.

SECTION IX - SPECIAL PRECAUTIONS

STORAGE: Store in cool dry well ventilated place

HANDLING: Avoid strong mineral acids.

LEGEND: ND, Not Determined; N/A Not Applicable; NA, Not Available.

NOTICE

All information appearing herein is based upon data obtained from chemical manufacturers and or recognized technical sources. While the information is believed to be accurate, Snyder Manufacturing Corporation makes no representations as to its accuracy or sufficiency. Conditions of use are beyond Snyder Manufacturing Corporation's control and therefore users are responsible for and assume all risks of their use, handling, and disposal of the product, or from the publication or use of, or reliance upon, information contained herein. This information relates only to the product designated herein, and does not relate to its use in combination with any other material or in any other process